

METAL RECYCLING COMPANY FEATURING 2013 IMABE HYDRAULIC BALER, BACKHOE, FORKLIFTS, SKID STEER, ROAD TRACTORS, TRAILERS, ROLL-OFF CONTAINERS, SCRAP PROCESSING MACHINERY, SCRAP, SUPPORT EQUIPMENT

BidSpotter.com
See Instructions on Page 3
To Become a Qualified Bidder on the Internet

PUBLIC AUCTION

Plant Closed



SILVER'S METAL COMPANY

1401 Woodland St. – Detroit, Michigan 48211
5 Miles North of Downtown, off I-75

SALE DATE: TUESDAY, FEBRUARY 12TH, STARTING AT 9:00 AM

INSPECTION: MONDAY, FEBRUARY 11TH, FROM 10:00 AM TO 4:00 PM



IMABE IBERICA Model CH-1400/73 Two Ram Hydraulic Baler



Material Processing Line w/ Shakers, Hammer Mills, Magnet, Screeners and Related



Scrap Processing Equipment Including Alligator Shears to 36"



Volvo Model EW180B Rubber Tire Wheeled Excavator



(27 +/-) Roll-Off Containers from 20 Yards to 30 Yards



Sale Under The Management Of

CINCINNATI INDUSTRIAL AUCTIONEERS

auctioneers | appraisers | since 1961 | cia-auction.com | info@cia-auction.com
2020 Dunlap St., Cincinnati, Ohio 45214 Phone 513-241-9701 Fax 513-241-6760



18" and 8" Alligator Shears



(3) Forklifts to 12,500 Lb. Capacity



6,000 Lb. JCB Model 527-55 Loadall Telescoping Forklift



Bobcat Model 753 Solid Tire Skid Steer Loader



NEW 2012

AGET Model FH585-4-SP Dusttop Filterkop Shaker-Type Dust Collector



NEW 2013

IMABE IBERICA Model CH-1400/73 Two Ram Hydraulic Baler

SCRAP STEEL INVENTORY

Large Assortment of Scrap Steel Inventory

TWO-RAM BALER

IMABE IBERICA Model CH-1400/73 Two Ram Hydraulic Baler; s/n 12162, 137 Ton Side and Down Acting Ram Force, (2) 37 KW Hydraulic Units, 51" X 40" Steel Belt Incline Infeed Conveyor, L+P Wire Tie Systems Model 331 Wire Tie Machine, Approx. 29" x 43" x 57" Bale Size, Multimeter Epomoy Control, (4) Joystick Control (New 2013)

SCRAP PROCESSING EQUIPMENT

36" Alligator Hydraulic Shear; 40 HP Hydraulic Unit, Clamp System

18" Enterprise Company Model 200-18-RH Alligator Shear; s/n 5496 (New 2014)

8" Constellation No. 1 1/2 Alligator Shear; s/n E6558V

Rigby Model 56R Wire Stripper; s/n 6122 (2005)

Telecom Model N/A Wire Stripper; s/n C51037

RMG Tech MiniSort 2391 Spectrometer w/ (2) Batteries and Charger

Innov-X Systems Model A-2000A Spectrometer; s/n 6247, w/

HP iPaq, Batteries & Charger

Innov-X Systems Model DP-2000 Delta Dynamics XRF Spectrometer; s/n 511085, w/ Charger & Batteries (New 2011)

MATERIAL PROCESSING LINE

Material Processing Line w/ Shakers, Hammer Mills, Magnet, Screeners and Related; Vibratory Infeed Shakers, Rubber Belt Infeed Conveyors, 75 HP 30" x 24" Magnatech Type UR-HM-1 Hammer Mills S/N 991292 (1999), 24" Magnatech Magnet S/N 991292, Fursberg Model 18XA200 and 18X4800 Screeners, Fursberg Type 5-6 Destoner, Dust Collection System, 100 HP Joy Rotary Screw Air Compressor - 745 Hours

DUST COLLECTOR

AGET Model FH585-4-SP Dusttop Filterkop Shaker-Type Dust Collector; s/n 5B-2058, 20HP Exhaust, 320 Filter Tubes, 2,800 Sq. Ft. Filter Area, (2) Shakers, 6,000 to 17,000 CFM Range, 120 Cu. Ft. Capacity (New 2012)

WHEELED EXCAVATOR AND MAGNET

Volvo Model EW180B Rubber Tire Wheeled Excavator; s/n

5D3053, 4,452 Hours, Volvo Incab Monitor System, Front/ Rear Hydraulic Outriggers, Volvo D6D, Straight 6, 4-Stroke Diesel Engine
48" Ohio Electro Magnetic Scrap Magnet w/ 13KW Bateman Genset

SKID STEER AND ATTACHMENTS

Bobcat Model 753 Solid Tire Skid Steer Loader; s/n 512721170, 4,233 Hours, 60" Bucket with Hydraulic Grabbers

96" Sweepster Model 20384M-0937 Sweeper Attachment; s/n 09340202

60" Ingersoll Rand Model 60 Sweeper Attachment; s/n 714403228

TELESCOPING BOOM FORKLIFT

6,000 Lb. JCB Model 527-55 Loadall Telescoping Forklift; s/n 1419085 2,630 Hours, 5,952 LB Max Payload, 18'4" Max Lift Height, 4-Cylinder Diesel, 4-Wheel Drive, 76" Wide Bucket, 2.25 Cubic Yard (New 2012)

FORKLIFTS

12,000 LB Caterpillar LP Gas Solid Pneumatic Tire Forklift; s/n 29C00541, Side Shift, 5,475 Hours, 2-Stage, 84" Mast

8,000 LB Clark Model C500-Y580 LP Gas Solid Pneumatic Tire Forklift; s/n Y685-0155-8415KOF; 3-Stage Mast, 240" Lift Height, Side Shift, 6,832 Hours, 84" Mast

6,000 LB Yale Model GLP060 LP Gas Solid Pneumatic Tire Forklift; s/n A875B31312B, 3-Stage Mast, 187.8" Lift Height, Side Shift, 9,287 Hours, Mast Height 83"

ROLL-OFF TRUCK AND TRAILER

1998 Western Star Model 49645X Tri-Axle Roll-Off Truck; Vin No. PDCJOWK952888, Dual Air Drop Axles, 75,000 LB Dunrite Roll-Off Hoist, 447.018 Miles, 8-Speed Eaton Fuller Transmission, 2-Speed Rear Axle, Chelsea PTO, Cat 3406E, 14.6 Liter Diesel Engine

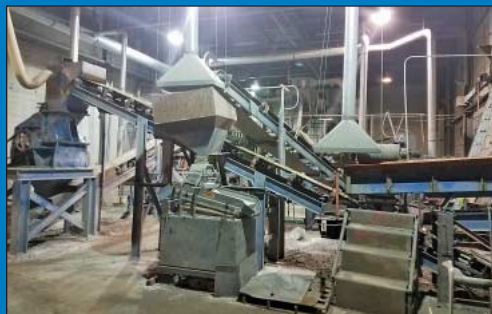
30' Dunrite Tri-Axle Roll-Off Trailer; Vin No. DR86079R03 (1986)

ROLL-OFF CONTAINERS

(27 +/-) Roll-Off Containers from 20 Yards to 30 Yards

ROAD TRACTORS

2002 Western Star Model 4900 Road Tractor; Vin No. 2XKJABAS83KL06767 409,173 Miles, 52,000 GVWR, 2-Speed Rear Axle, Cat C-12 Diesel Engine, Rated 430 HP



Material Processing Line w/ Shakers, Hammer Mills, Magnet, Screeners and Related



Volvo Model EW180B Rubber Tire Wheeled Excavator



48" Ohio Electro Magnetic Scrap Magnet w/ 13KW Bateman Genset



2002 Western Star Model 4900 Road Tractor



1998 Western Star Model 4964SX Tri-Axle Roll-Off Truck



2000 - 42' - 80,000 LB Somerset Model ALF-04 Aluminum Box Walking Floor Trailer

1994 Kenworth Road Tractor; Vin No. 1XKADB9X4SR645287, Aerocab Sleeper Cab, 199,174 Miles Showing, (Miles Over), Muncie Wet Kit

TRAILERS

2000 - 42' - 80,000 LB Somerset Model ALF-04 Aluminum Box Walking Floor Trailer; Vin No. 1S94A4524179006802

53' Fruehauf Tandem Axle Van-Body Trailer; Vin No. 1JJV532F0WF485215

48' Fruehauf Model PB-F2-48 Tandem-Axle Flatbed Trailer; Vin No. 4P0482XDF066505, 30,000 LB Capacity

45' MAC Tandem Axle Open Top Aluminum Trailer; Vin No. 5MATN45251C004056 (2000)

48' Great Dane Model GPMWSAR-248 Tandem Axle Flat Bed Trailer; Vin No. IGRDM962XNM020748 (1991)

TRUCK SCALE

200,000 LB B-TEK Model BT-7211-200-FESD-SL-D Drive On Truck Scale; s/n 12042953, 11' X 148" Platform, with Digital Read Out

DOCK RAMPS

(2) 20,000 LB, 77" Wide X 34' Long Yard King Model AY206436L Mobile Dock Ramps; s/n's 982202 & 981450, Torsion Axle

MISC. MACHINERY AND SUPPORT EQUIPMENT

Miller Model Bobcat 225 AC/DC Generator Welder

13" x 40" Bolton Tools BT1340G/I Engine Lathe

General Hydraulics Vertical Baler

Fox Hydraulic Vertical Baler

Wysong No. 572-A Shear

20,000 LB Avery Weightronix Platform Scale; s/n 83142, DRO

1-1/2 HP JET Model JVM-836-1

Vertical Milling Machine

Thermal Dynamics Cutmaster 50 Plasma Cutter

Large Quantity of Shop and Support Equipment Including:

Hand Tools, Power Tools, Jobboxes, Ladders, Fans, Heaters, Toolboxes, Workbenches, Battery Chargers, Shop Vacs, Platform Scales, Saws, Drill Presses, H-Frame Presses, Generators, Floor Jacks, Chains, Vises, Pumps, Double End Grinders, Arbor Presses, Ingersoll-Rand Vertical Air Compressors, Hobart Welder, Sheet Lifters, Chop Saws, Pallet Jacks, Dock Plates, Spare Motors, Banding Carts, Band Saws

WEBCAST BIDDER INSTRUCTIONS

- **Bidders in the United States** will receive approval forms from our office upon registering for the auction on www.bidspotter.com, pending the Auctioneers review of the information provided you will be approved at the Auctioneers discretion.
- **Bidders outside of the United States** must post a deposit of approx. 25% of their planned spending budget or \$2,500.00 minimum with Cincinnati industrial auctioneers in order to be approved to bid. Those who do not post the deposit will not be approved. **period.**



(27 +/-) Roll-Off Containers from 20 Yards to 30 Yards



200,000 LB B-TEK Model BT-7211-200-FESD-SL-D Drive On Truck Scale



30' Dunrite Tri-Axle Roll-Off Trailer

PUBLIC AUCTION

Plant Closed

SILVER'S METAL COMPANY

1401 Woodland St.
Detroit, Michigan 48211
5 Miles North of Downtown, off I-75

SALE DATE:
Tuesday, February 12th
STARTING: 9:00 AM

INSPECTION:
Monday, February 11th
10:00 AM to 4:00 PM



CINCINNATI
INDUSTRIAL AUCTIONEERS

auctioneers | appraisers | since 1961

Contact Information
2020 Dunlap St.
Cincinnati, Ohio 45214
Phone 513-241-9701
Fax 513-241-6760
www.cia-auction.com



Two-Ram Baler (2013)



Volvo Excavator



Processing Line



(27 +/-) Roll-Off Containers

FIRST CLASS MAIL!

PRE-SORT
FIRST CLASS
U.S. POSTAGE
PAID
CINCINNATI, OHIO
PERMIT NO. 3593

Important Mail

TO BE DIRECTED TO THE ATTENTION
OF EXECUTIVE PERSONNEL



TUESDAY, FEBRUARY 12TH

PUBLIC AUCTION

Plant Closed

SILVER'S METAL COMPANY

1401 Woodland St.
Detroit, Michigan 48211
5 Miles North of Downtown, off I-75

IMPORTANT NOTICE:

Although information has been obtained from sources deemed reliable, the auctioneer makes no warranty or guarantee, expressed or implied, as to the accuracy of the information herein contained. It is for this reason that buyers should avail themselves of the opportunity to make inspection prior to the sale. This brochure is intended to provide general information of the equipment being offered and is subject to errors, omissions, additions or deletions. Please check with the Auctioneer's Office for a final listing. Items offered may or may not necessarily be sold as described and/or photographed in this brochure.

MAIL BIDS ACCEPTED WITH A 25% DEPOSIT

DIRECTIONS

From I-75 in Downtown Detroit Proceed to Exit 55 for Holbrook Ave/Caniff Ave. Turn West onto Holbrook Ave Continue Across the Overpass to the Right Turn North onto Delmar Street. Proceed 1/2 Mile on Delmar to Right Turn onto Caniff Street, Take the First Left onto Russell Street. Follow the Road Left Then Take an Immediate Right Turn onto Oakland Park. Take the First Right onto Woodland Street and the Sale Site Will be the First Building on the Right. Watch for Auction Signs and Auction Parking.

AUCTIONEERS

Cincinnati Industrial Auctioneers, Inc.

Jeffrey L. Luggen
Joseph M. Luggen
John F. Rome



TERMS OF SALE

All equipment described herein will be sold "as is", "where is" to the highest bidder or bidders for cash in accordance with our regular terms and conditions of sale. Unless other satisfactory arrangements are made, a **25% deposit** in cash, certified or cashier's check payable to Cincinnati Industrial Auctioneers, Inc., **is required on all purchases.** Firm and personal checks accepted only if accompanied by a letter from your bank guaranteeing your funds. All sales are subject to state and/or local taxes unless a signed exemption form is presented at the time of purchase. **All balances are due at the conclusion of the sale.** No merchandise may be removed while the sale is in progress. **All bidders must comply with our Standard Terms of Sale,** copies of which will be available at the sale site or can be obtained from our website.

15% ONSITE BUYER'S PREMIUM
18% ONLINE BUYER'S PREMIUM

Sale Under The Management Of



CINCINNATI INDUSTRIAL AUCTIONEERS

auctioneers | appraisers | since 1961 | cia-auction.com | info@cia-auction.com
2020 Dunlap St., Cincinnati, Ohio 45214 Phone 513-241-9701 Fax 513-241-6760